

ETD24ACS Quick Hitch Valve

- Need a Quick Hitch Valve that's small and compact?
- Need to prevent high hydraulic pressure damage to the Lock mechanism?

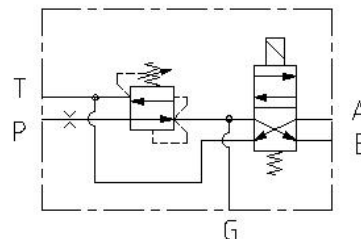
Our ETD24ACS Quick Hitch Valve is designed to be easily installed into new or existing Quick Hitch System for excavators, backhoes or loaders. They are ideal for installing low pressure Lock release actuators into high pressure systems, protected by a built-in pressure reducing valve. Other Models are available with additional features, such as Power Tilt control.

As with all our Standard Products, these Quick Hitch Manifolds provide the industry with the best in design innovation and product quality.

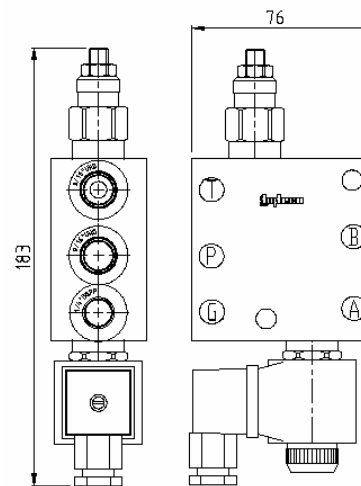


Features of Quick Hitch ETD24ACS

Input Pressure (Max):	420 bar
Output Press. Range:	35-90 bar
Rated Flow:	12 l/min
Main Ports:	9/16" UNO
Gauge Port:	G- 1/4" BSPP
Voltage Options:	12 & 24DC
Body:	Steel, plated
Mounting:	2x 8.8mm holes
Approx. Mass:	2.5 kg

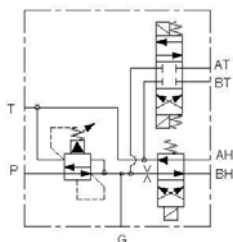


ETD24ACS Circuit



ETD24ACS Layout

Also available



Quick Hitch with Tilt

Ordering Code

Part No	Voltage
ETD24ACS-10A	- 12 VDC
ETD24ACS-10B	- 24 VDC

For more information on the complete range of Hyteco manifolds, call the **Hyteco Sales Line**

Tel: 07 38813312 Fax: 07 38813314
 sales@hyteco.com.au www.hyteco.com.au